



PACKING

Baling service EXPORT RDF

LOGISTICS

SCHUSTER ENGINEERING offers its comprehensive baling service to the waste and energy industries, encompassing baling operations, bale handling and logistics, for storage or transport.

SCHUSTER ENGINEERING works with its customers to set up optimal baling operations, including:

- Materials movement planning and site management; in building to stand alone outside operations.
- Assistance in the preparation of RDF for baling, shredding & feeding. Baling line configuration.
- Bale size decisions, and packing materials requirements.
- Baling line output, manning, maintenance, and guarantee to meet each customer's requirements.

The centre piece of a SCHUSTER ENGINEERING baling service is the use of the "SPEED-BALER", with patented technology to provide high quality bales, efficiently and quickly:

- Baling is carried out in an enclosed container, with safety and control features.
- High compaction of bales with net and film wrapping layers to customer's specifications.
- Experienced and skilled plant operators, quality control and meeting production targets.

The supporting services and experience of SCHUSTER ENGINEERING make the planning and execution of baling activities easy:

- Bale handling services add to overall efficiency. Skilled operators ensure loading and bale movement is smooth and with due care.
- Baling lines can be set up or relocated on short notice, with back up support – a dependable service.
- Baling operations and production statistics reports are provided to support management control.

**SCHUSTER ENGINEERING offers a high speed and efficient RDF packing service.
Call 0049 8336 80020 or send an email to adams@schusterengineering.de**

Baling lines.
Designed for the job
RDF and domestic waste
For storage or transport.



Baling line for prepared material



Baling line for bulky materials



High speed multi purpose line



SCHUSTER ENGINEERING has been a leading supplier of baling services to the waste and power industries for over ten years.

The **SCHUSTER ENGINEERING** baling line equipment has been developed and manufactured in house, following extensive operations experience in the baling of a wide range of materials.

The **SCHUSTER ENGINEERING** baling service is designed to provide customers a reliable and cost efficient solution for all waste and residues baling needs.

Contact:

SCHUSTER Engineering GmbH
Riedbachweg 16
87746 Erkheim / Germany

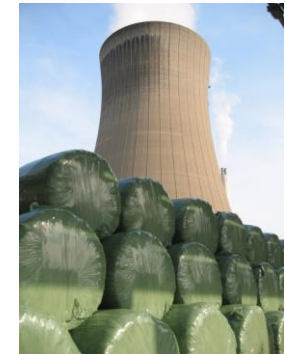
Phone: +49 /8336 /8002-0
Fax: +49 /8336 /8002-50
e-mail: info@schusterengineering.de
Homepage: www.schusterengineering.de

SCHUSTER Engineering UK Ltd.
Starts Operation
October 2012

**Specialists in Baling
RDF and domestic waste!**



**Packaging of RDF
for export markets**



Waste to Energy

